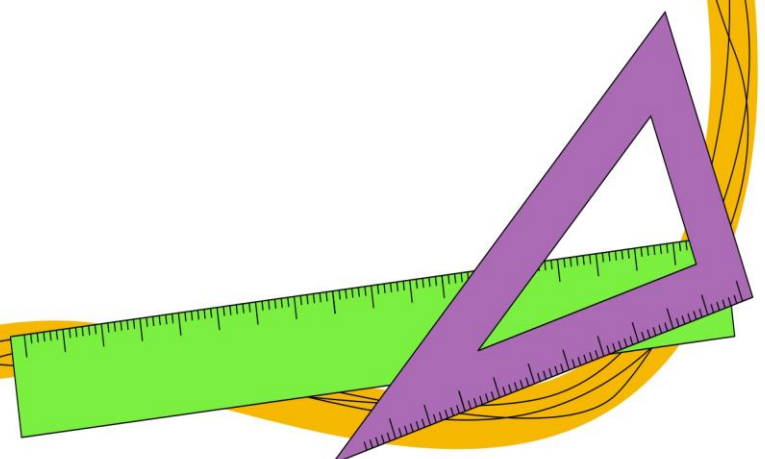
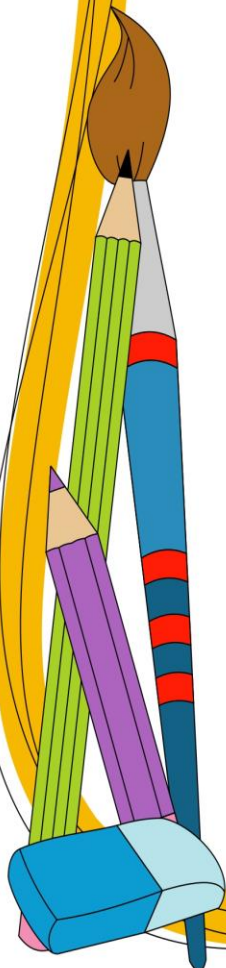


Leighfield
Primary School

Learning for Life

Transition Book

EYFS



We are all really looking forward to welcoming you to Leighfield Primary School and will share throughout this book, the people and places you may like to look at before you start.

This is the front of the school.



This is the gate where you will come in every morning.



You will go home from here as well.

We will be your Class Teachers

Mrs Wallace

(Monday and Tuesday)



Mrs Bdesha

(Wednesday - Friday)



We will also be in the classroom to support you.

Mrs De Bar



Mrs Ind



This is your playground and the cloakroom where you will hang your bag and coat.



This is your classroom.



These are the classroom toilets.





Miss Atkinson teaches in the classroom each week on a Wednesday morning.



Mr Crowden is our sports coach, and he teaches P.E. with us on a Monday and Tuesday afternoon. You will come to school in your P.E. kit on these days.



Mrs Ind delivers our Little Wandle guided reading sessions. On a Wednesday morning, she also takes the class to the Secret Garden at the bottom of our field for our weekly Forest School session. You will come to school in Forest School clothes on a Wednesday.

Here are our ELSAs (Emotional Literacy Support Assistants)



Mrs Laird



Mrs Blackford



Bella – our school dog

Mrs Eaton is the Head Teacher



Office Staff



Miss Perera



Mrs O'Brien

This is the dining hall where you will have your lunch and our lunch staff team.



We are looking forward to seeing you soon.